

# A greener, better-connected west

## Kororoit Creek

The West Gate Tunnel Project is more than a road, we are also delivering new cycling and walking paths and creating nearly nine hectares of new open space.

This open space will be made up of parks and wetlands, and over 17,000 trees will be planted along the project corridor by the time the tunnels open in 2022.

Along the West Gate Freeway and around the Kororoit Creek area of the project, we will create a greener and better-connected west by:

- Completing the missing link in the Kororoit Creek shared use path with a direct connection to the Federation Trail
- Celebrating the historical significance of the original bluestone bridge on Old Geelong Road via interpretive signage which will express the bridge's heritage, cultural significance and contribution to the Kororoit Creek Trail
- Highlighting the importance of the indigenous landscape of the creek through signage identifying significant species and their uses
- Creating rest stops with seating and signage, set amidst Indigenous plantings of grasses and woodland species along the shared use path
- Planting woodland tree species to increase tree canopy cover for the area.



Artist impression of the Kororoit Creek Trail linking to the Federation Trail



# Kororoit Creek

## Tree and plant species

A selection of native grasses, trees, ground covers and shrubs, will green and colour the Kororoit Creek and shared use path connecting to the Federation Trail.

A variety of Eucalyptus trees including the River Red Gum will rise 30 metres in the sky providing canopy cover 15 metres wide, while ground covers including the Native Pigface and Common Everlasting will provide a burst of purple and yellow amongst the landscape.

### ● Groundcovers



Creeping Boobialla



Milky Beauty Heads



Common Everlasting



Creeping Saltbush



Native Pigface

### ● Native Grasses



Blue Flax Lily



Cotton Fireweed



Slender Dock



Spreading Flax Lily



Chocolate Lily

### ● Native Trees



Silver Banksia



Red Flowering Yellow Gum



Yellow Box



Black Tea-tree



River Red Gum

### ● Screening & Large Shrub



Gold-dust Wattle



Dropping Cassinia



Hop Goodenia



Australian Indigo



Woolly Tea-tree

### ● Small Shrub



Vanilla Lily



Rock Correa



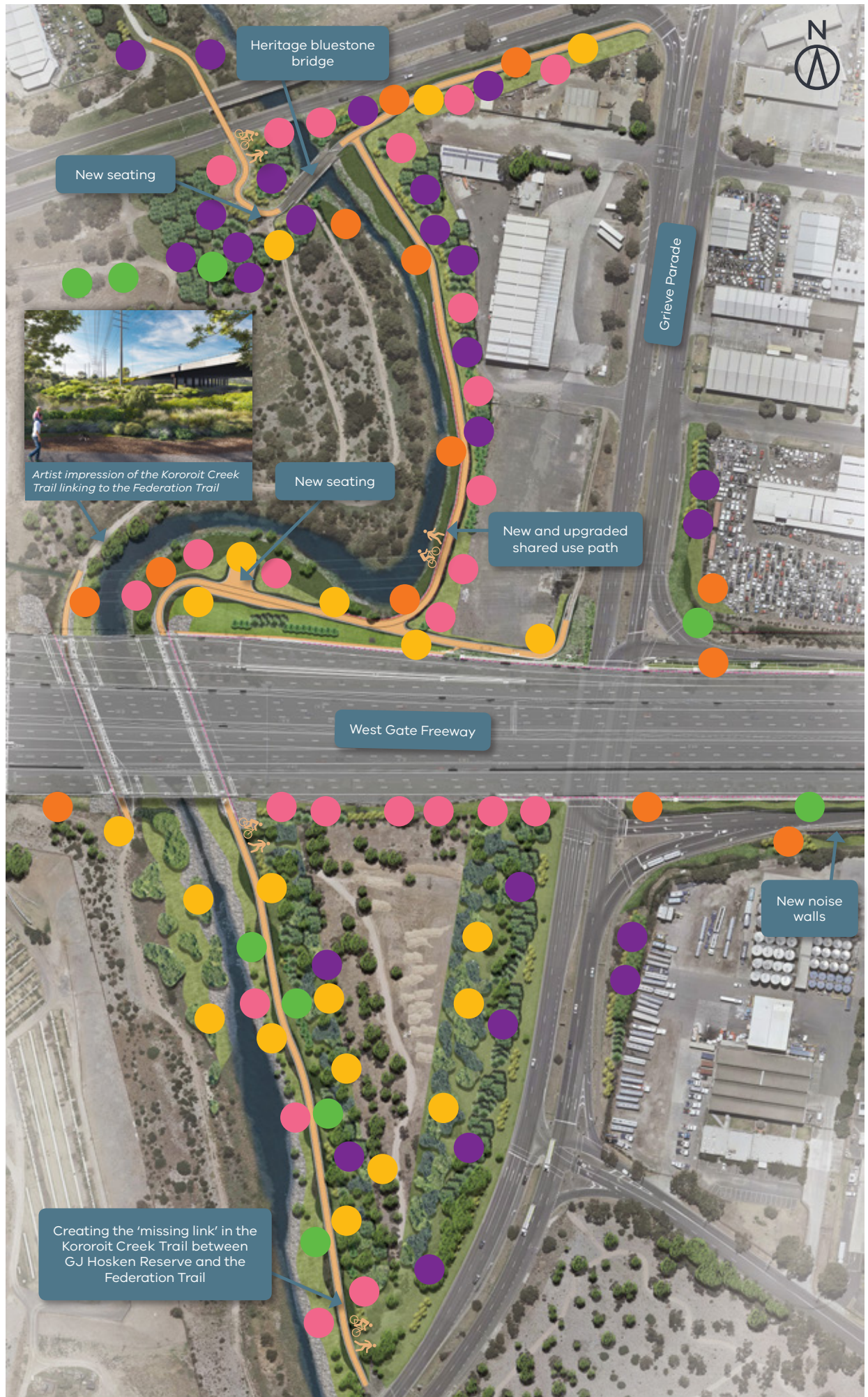
Ruby Saltbush



Native River Mint

Please note that the species and images listed are not limited to that shown above and are only a selection from the overall planting palette.

Right: Artist impression – subject to further development





## Designing open space

The open space landscape design has been shaped by:

- **Improving the Kororoit Creek shared use path** by resurfacing existing sections and filling in gaps with new path, creating better connections
- **Improving public safety** by providing clearer sightlines throughout the area
- **Refining plant species** chosen to highlight the different indigenous vegetation classes and enhance biodiversity and habitat along the creek corridor
- **Planting locations** to maximise tree canopy cover and enhance biodiversity and habitat along the creek corridor
- **Minimising ecological disturbance** by taking existing plants and habitats within the Kororoit Creek corridor into account.



*A selection of native grasses, trees, shrubs and ground covers will be planted*

## Working with stakeholders

After years of talking with communities, local authorities and our Community Liaison Groups, we understand that landscaping is of great interest to locals.

Feedback indicates that community members are keen to see vegetation replaced quickly, with a focus on native plants that will complement and adapt well to the existing local environment, and provide a green visual screen in a range of areas, including near new noise walls.

Residents are also keen to see the project construction sites transform into open spaces for the community, creating new recreation areas along the project corridor.

We will continue to work with local authorities and the community as we build the new open space.



## Contact us

Do you have a question about the project? If you need more information or would like to provide feedback, please get in touch.



1800 105 105



@westgatetunnel



[westgatetunnelproject.vic.gov.au](http://westgatetunnelproject.vic.gov.au)



West Gate Tunnel Project  
GPO Box 4509, Melbourne  
Victoria 3001



[info@wgta.vic.gov.au](mailto:info@wgta.vic.gov.au)



[facebook.com/westgatetunnelproject](https://facebook.com/westgatetunnelproject)



**Interpreter service: 13 14 50**

If you are deaf, or have a hearing or speech impairment, contact us through the National Relay Service. For more information, visit: [www.relayservice.gov.au](http://www.relayservice.gov.au).